



McGill

Collaborating for responsible AI

Make *your* mark



**Artificial intelligence (AI)
and data-driven technologies
and processes are everywhere.**

AI and data science are pervasive and often invisible parts of our daily lives.

AI technologies are already doing a great deal of social good and promise to do even more.



But AI technology is evolving faster than we can adapt, and not necessarily in the right ways.

We need to pay attention to significant strategic blind spots.



Technologies enter the marketplace before we understand their risks. Ethical, financial and social harms often only emerge when the damage is done.

We need to seize opportunities to harness AI and novel technology to have **the greatest positive impact on domains like sustainability, global health and education.**

Through the **McGill Collaborative for AI & Society (McCAIS)**, we are enabling the McGill community – across all faculties – to empower people, institutions, industries and governments to **live and work well with AI.**

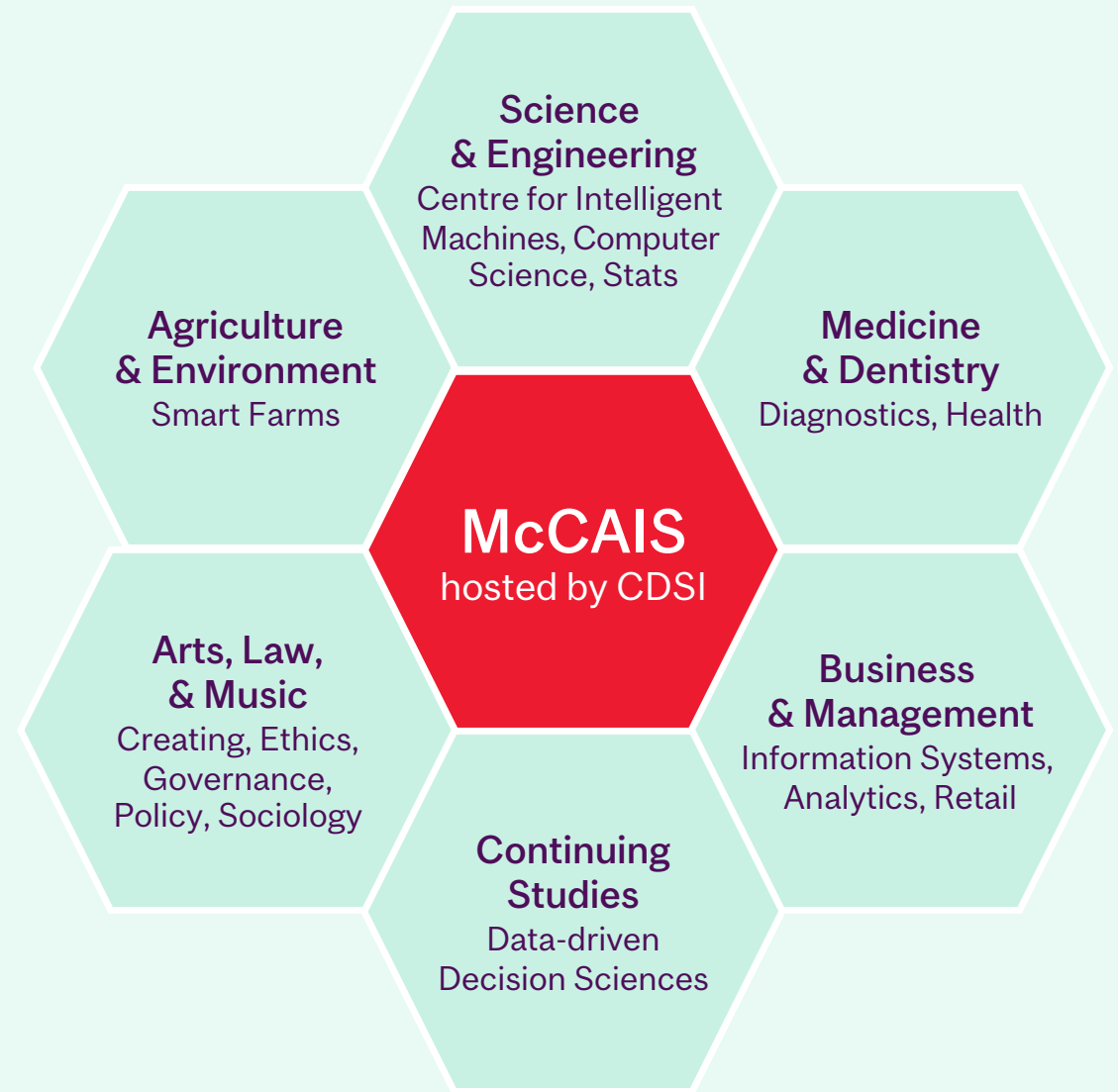


McCAIS: An all-of-McGill effort

McCAIS is hosted by the **Computational and Data Systems Institute (CDSI)**, which is based in the Faculty of Science. CDSI serves as a hub for the rich ecosystem of McGill investments at the nexus where computing, data and systems meet, particularly around AI and data science. This includes:

- The [CDSI Data Science Solutions Hub \(DaS2H\)](#), which supports researchers across all faculties with data science tools
- The [Convergent Research Themes Program](#), which incubates multi-disciplinary research in which computational and data systems are central
- [Training](#) in computing, data science, machine learning, large language models and more, which provides upskilling for thousands of learners across the University each year

**McCAIS is a truly interdisciplinary,
McGill-wide effort that brings the
strengths and expertise of all
faculties together to understand
the impact of AI on society and
develop evidence-based best
practices for its responsible use.**





Designed for impact

We are partnering to live and work well with AI, by:

- Supercharging discovery across faculties and disciplines with the smarter use of data
- Driving new AI and computational technologies, process and policies
- Promoting evidence-based practices to ensure AI and big data are benefiting society
- Engaging in public outreach initiatives
- Advising policy
- Shaping an AI future-ready workforce with the skills and experience to advance knowledge and drive positive social change

Make *your* mark

Collaborating for responsible AI

Opportunities for philanthropic support

- 1 Thought leadership
 - 2 Research to action
 - 3 Future-ready students
 - 4 Lifelong learning
-
- 5 Giving strategically: The McCAIS Opportunities Fund



Thought leadership in AI innovation

Support accessible and timely expertise on society and AI

The groundwork

At McCAIS, we are building a collaborative ecosystem for interdisciplinary AI research that involves universities, governments and corporations – partnering to live and work well with AI.

McGill researchers across all faculties are actively working on AI and machine learning. In 2023-24 alone, this included more than 230 grants from 32 funding sources totalling \$62M, spanning a wide range of disciplines, including:

- fundamental science
- media studies
- business and management
- robotics
- image processing
- gaming
- healthcare and medicine
- higher education
- language processing
- digital literacy
- sustainability





Your impact

Your gift will help McGill researchers address critical questions around socially responsible innovations in AI, such as:

- AI methods to help physicians make personalized treatment decisions to improve patient outcomes
- Smart-charging applications for residential electric vehicles
- Smart agri-food solutions for improved soil health, enhanced animal welfare in the dairy industry, and tracking global biodiversity change
- Improving conversational AI models to expand access to global knowledge

With your support, we can deepen our expertise in these areas and grow our thought leadership by:

- Establishing research hubs in areas such as:
 - Smart ethics, human nature and generative AI and technology
 - Agri-food
 - Disruption management
- Developing public engagement and knowledge exchange mechanisms such as workshops, podcasts and embedded sabbaticals for faculty members





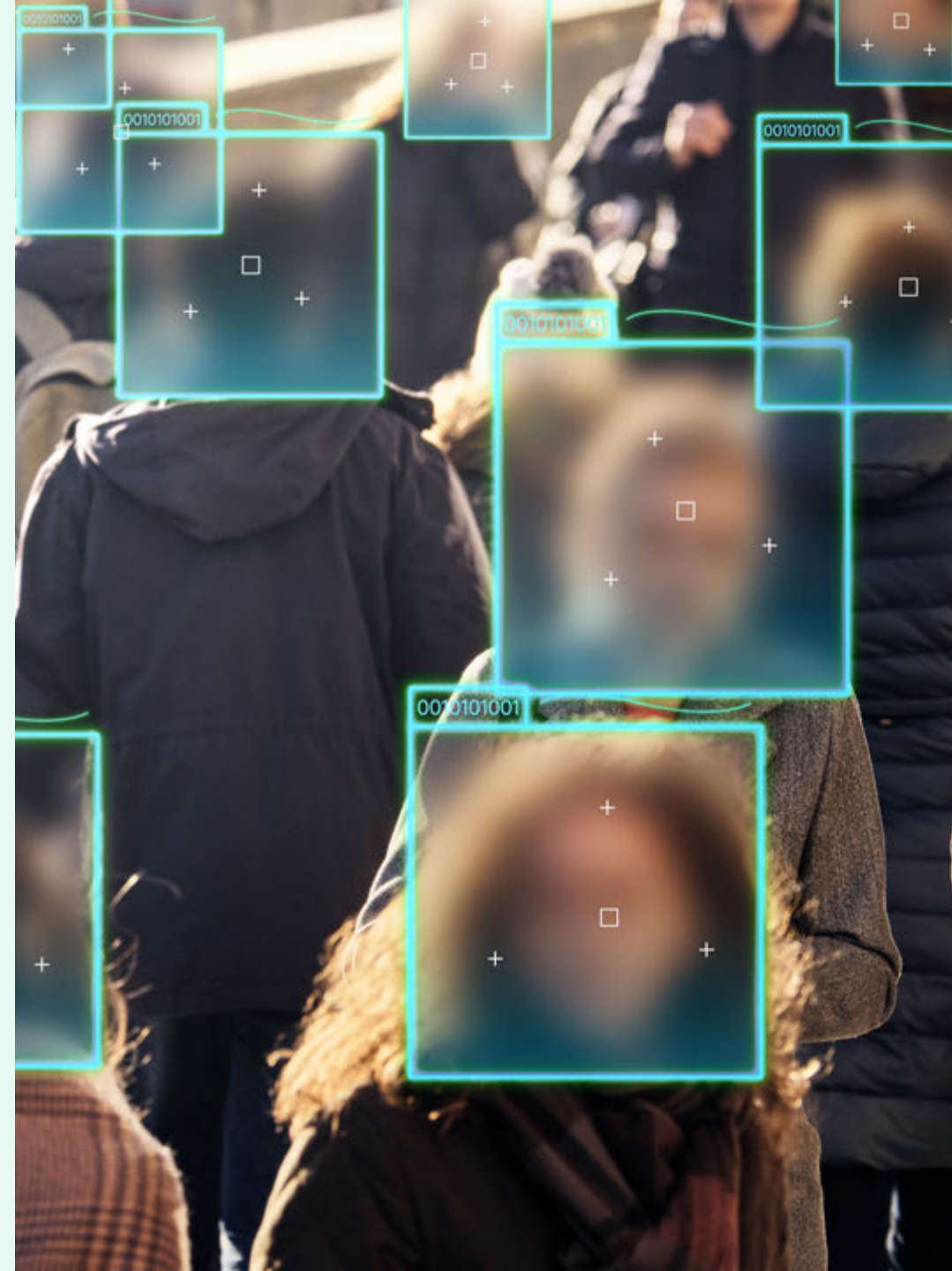
Research to action

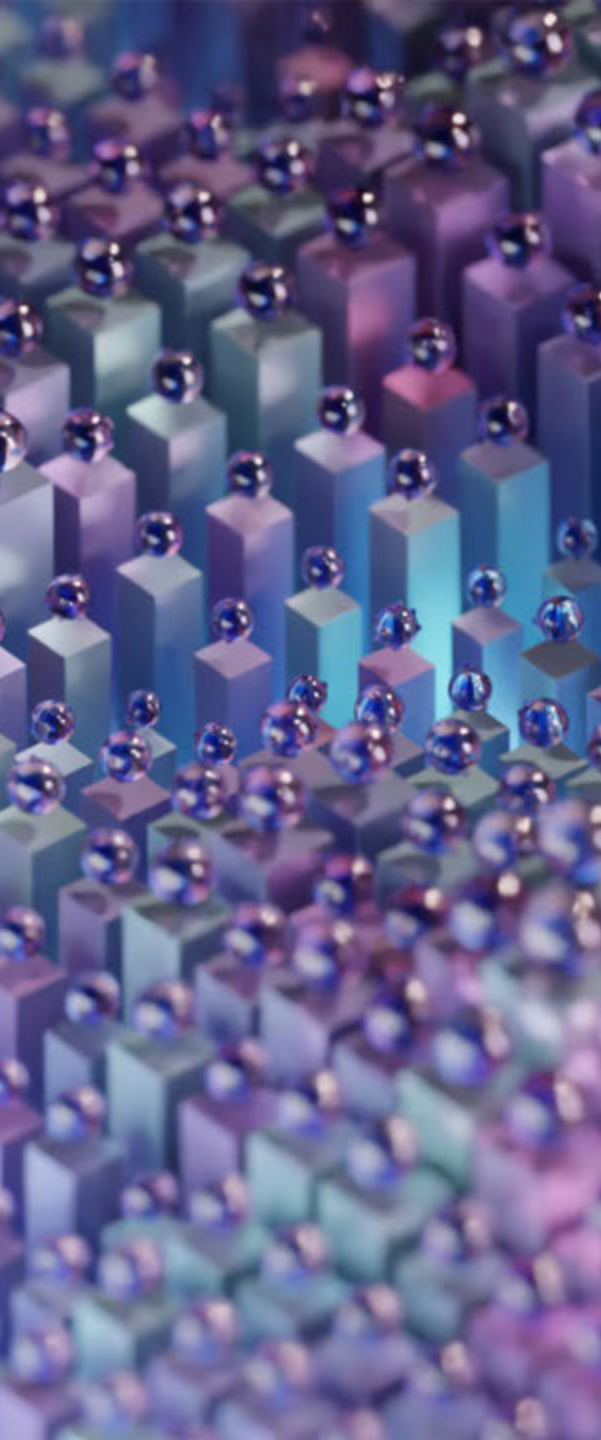
Help us harness the potential of AI to turbocharge research for society

The groundwork

Our researchers are collaborating on multidisciplinary teams to address topics central to the intersection of AI and society.

A pillar of this work is the concept of **Research to Action (R2A)**: ensuring that our research has real impact beyond the academic setting and is adapted ethically and responsibly in its real-world applications.





Your impact

Your gift will play a pivotal role in strengthening our teams' ability to navigate the various stages of translating research into real-world solutions. With donor support, we will:

- Fund the following research seed funding programs:
 - [CDSI Convergent Research Themes Program](#)
 - [McCAIS Interdisciplinary Research Development Awards](#)
- Launch a new AI in Software Development Program to help discover and teach best practices for managing AI disruption around coding
- Provide structural support to catalyze innovation in creative AI (games, music and storytelling)
- Further explore and incorporate ethical and inclusive AI systems design



Future-ready students

Support experiential learning opportunities

The groundwork

CDSI and McCAIS offer a rich ecosystem of experiential learning opportunities to complement what McGill students learn through their primary degree programs.

These opportunities help students move from classroom theory to real-world applications, preparing them to bring their knowledge and skills into future careers.





Your impact

With your support, we can equip our students with practical experiences working on practical problems, while they expand their networks in the private, public and plural sectors. Examples include:

- Hackathons and challenges
- Industry networking and mentoring events
- Internships
- Innovation hubs



Lifelong learning

Reskilling and upskilling for an AI-ready community

The groundwork

In the face of rapid advances in AI, we are developing a spectrum of educational resources to support learning around the ethical and responsible development and adoption of AI in society.





Your impact

With your support, we can empower learners across a variety of sectors and at all stages of their careers to leverage the potential of AI in an ethical and responsible manner. Donor funding will allow us to develop new resources and programs such as:

- An interdisciplinary undergraduate program in Ethics & Responsible AI
- AI for Society Fellowship Program
- Integrated modules in the CDSI training series
- Workforce training workshops
- Extension of these and other existing AI offerings to online learners, including tutorials, certificates and micro-credentials



Giving strategically

The McCAIS Opportunities Fund

You can maximize the impact of your donation by giving through the **McCAIS Opportunities Fund**.

Your gift will help us advance our major priorities outlined above, while also giving us the flexibility to respond to emerging opportunities quickly and strategically.



The background of the slide is a blurred photograph of several people in a meeting or collaborative work environment. They appear to be looking at a screen or documents. The image is overlaid with a semi-transparent purple filter.

The result: Partnering for impact



Your gift will support:

- **Thought leadership and impactful AI research** across disciplines ranging from healthcare and engineering to the environmental and social sciences
- **Inter- and trans-disciplinary collaborations** that transform research into ethical and responsible AI for society
- **Hands-on experiences** that help students move from classroom theories to real-world applications
- **Reskilling and upskilling** of learners of all ages and abilities for an AI-ready community





With your philanthropic support, we can create:

Opportunities that open doors

Ensuring that no qualified student is denied a McGill education for financial reasons, while expanding the range of perspectives on campus.

Research that changes lives

Pushing the boundaries of knowledge and collaborating at the intersection of disciplines where solutions to global challenges will emerge.

Innovation that drives progress

Building a vibrant innovation ecosystem that brings creative ideas from the classroom or the lab to the marketplace and the community.

Education that shapes future-ready students

Training students to thrive as engaged citizens and leaders, while making a positive impact on the world around us.

McGill University is on land which has long served as a site of meeting and exchange amongst Indigenous peoples, including the Haudenosaunee and Anishinabeg nations.

We acknowledge and thank the diverse Indigenous peoples whose presence marks this territory on which peoples of the world now gather.

Make *your mark* today.



McGill

McCAIS

McGill Collaborative
for AI and Society

giving.mcgill.ca/ai